



**Tunnel Brace Installation Guide** v2.0 (Mar 2015)

Part No's: EC0101-0301

## Application

VW Mk7 Golf, GTI, FWD  
Audi 8V A3 1.8T FWD

## List of Parts Included

- (1) Tunnel Brace
- (2) Front Spacers
- (4) M8 Hex Cap Screw
- (4) M10 Hex Cap Screw
- (4) M8 Washers
- (4) M10 Washers
- (4) Rear Spacers
- (4) Barrel Cap Nuts

## List of Required Tools

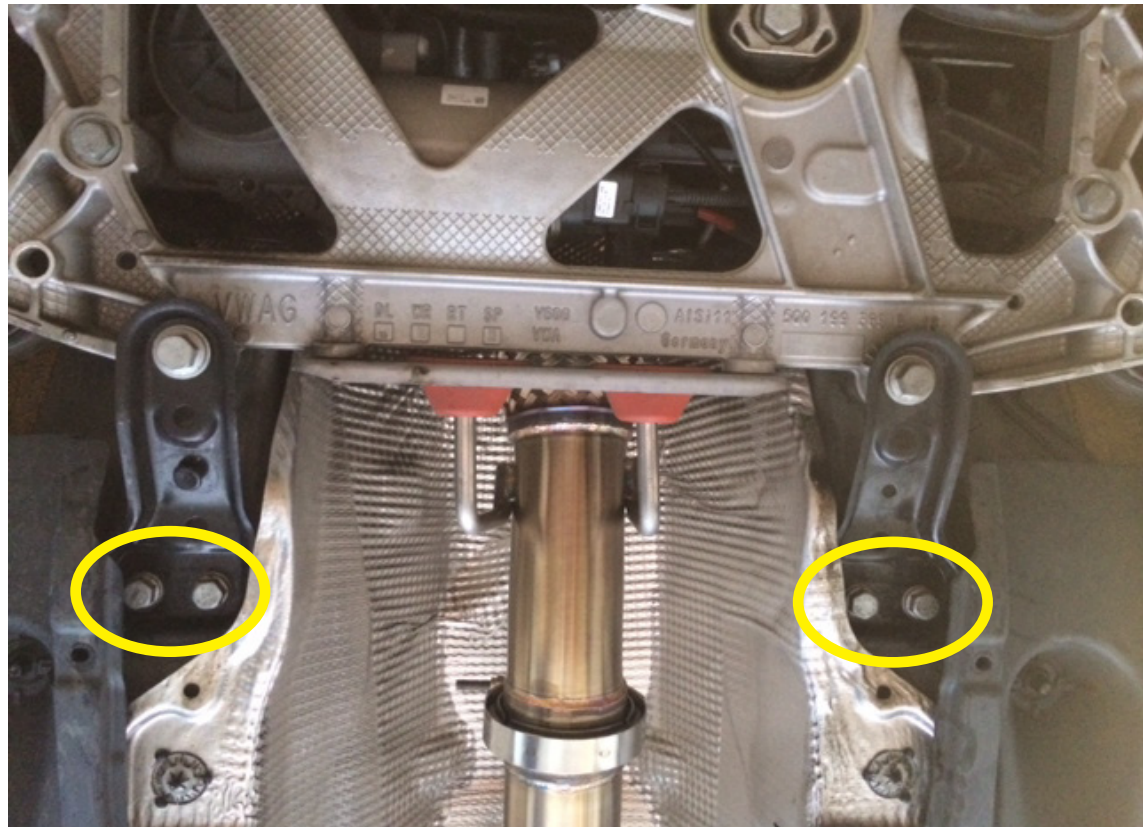
- 10mm Socket
- 13mm Socket
- 17mm Socket
- No. 5 Allen Socket
- Torque Wrench
- Vehicle Lift or Jack Stands

**Proper service and repair procedures are vital to the safe, reliable operation of all motor vehicles as well as the personal safety of those performing the repairs. Standard safety procedures and precautions (including use of safety goggles and proper tools and equipment) should be followed at all times to eliminate the possibility of personal injury or improper service which could damage the vehicle or compromise its safety.**

# STEP 1

Raise the vehicle using an automotive lift or jack stands. The black plastic covers on both sides may be removed to get better access. Use a 10mm socket to remove.

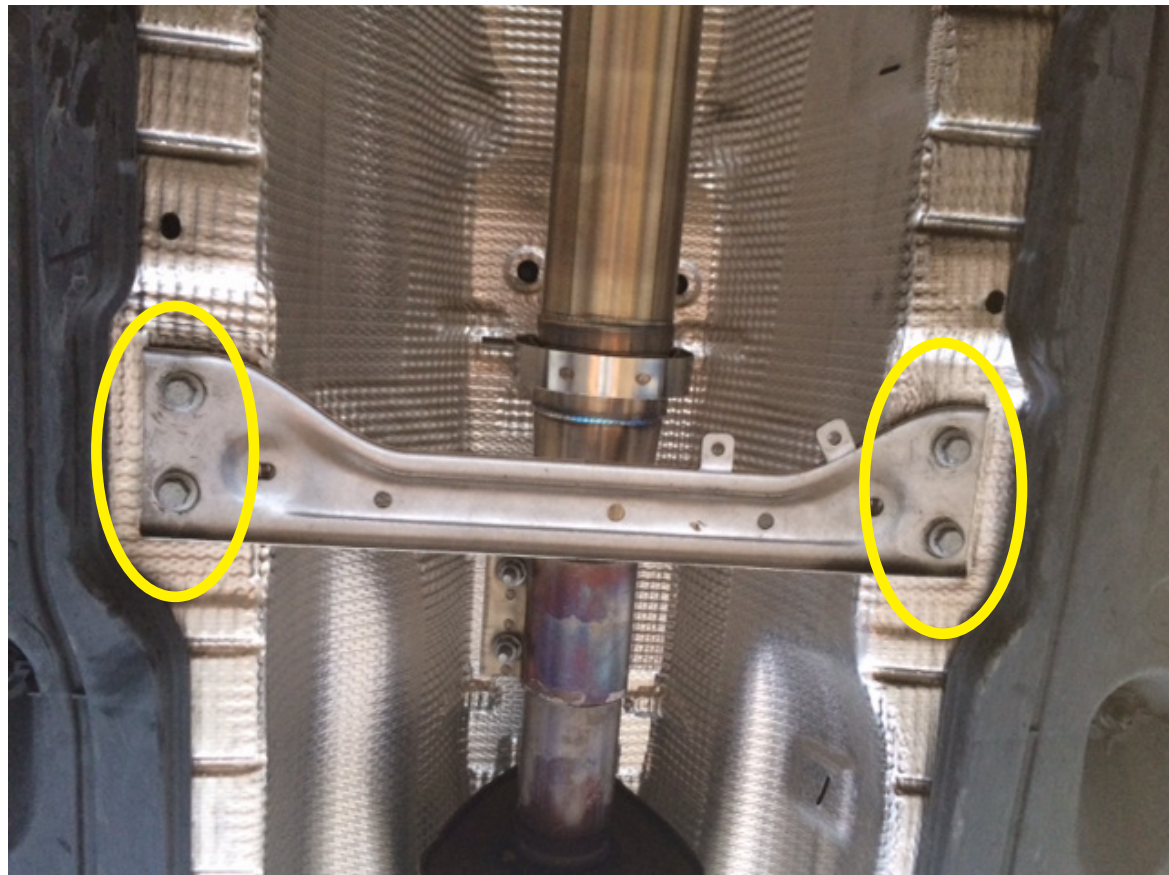
Remove the 4 bolts that secure the two Engine Subframe Supports using a 13 mm socket or a 17 mm socket depending on the model of the car. (Note: These bolts are stretched when installed at the factory, do not reuse these bolts.)



# STEP

## 2

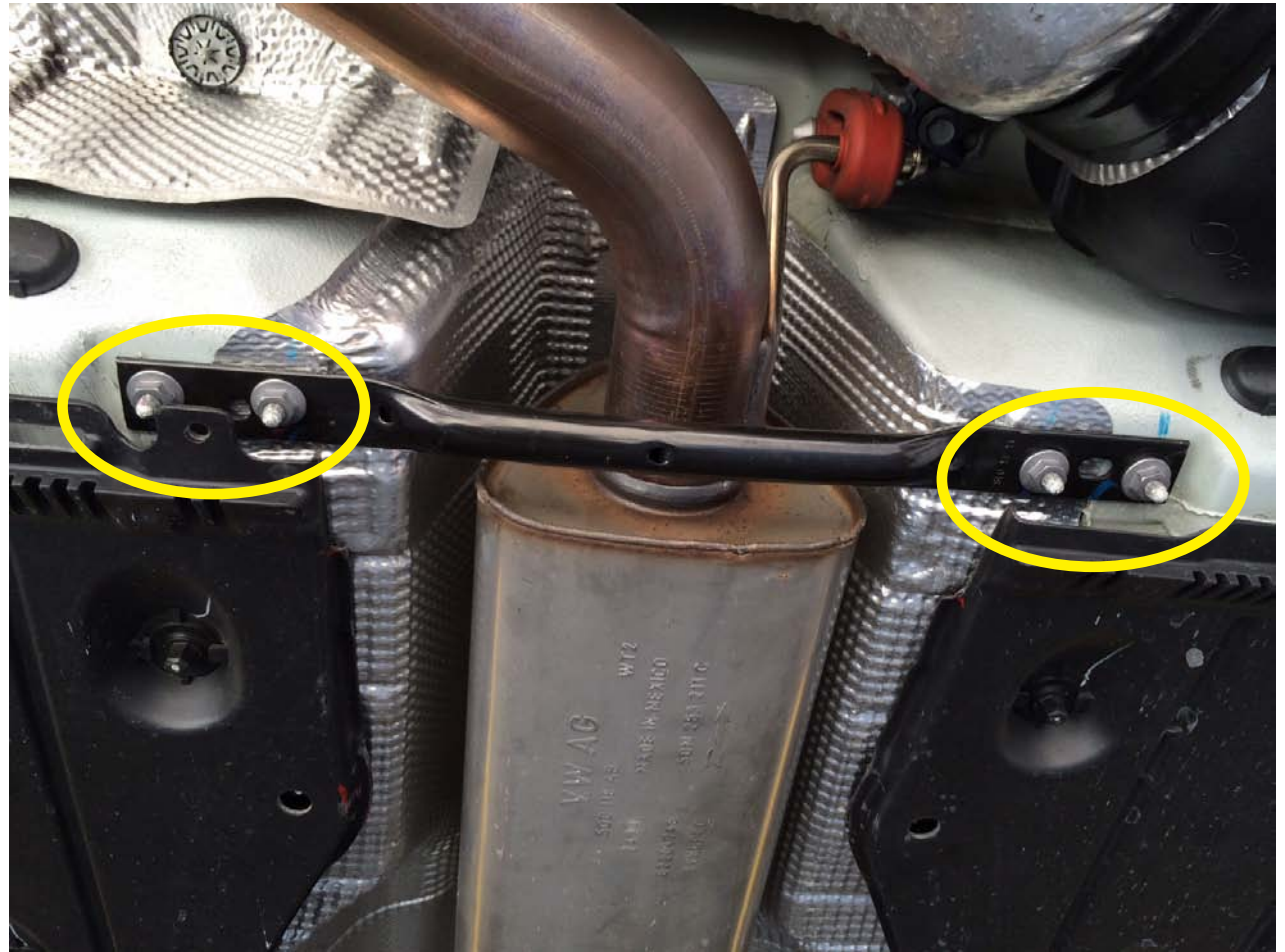
Remove the four bolts that secure the center OEM brace using a 13mm socket. Remove the brace but keep the bolts, these will be reused to install the Eurocode Tunnel Brace.



# STEP

# 3

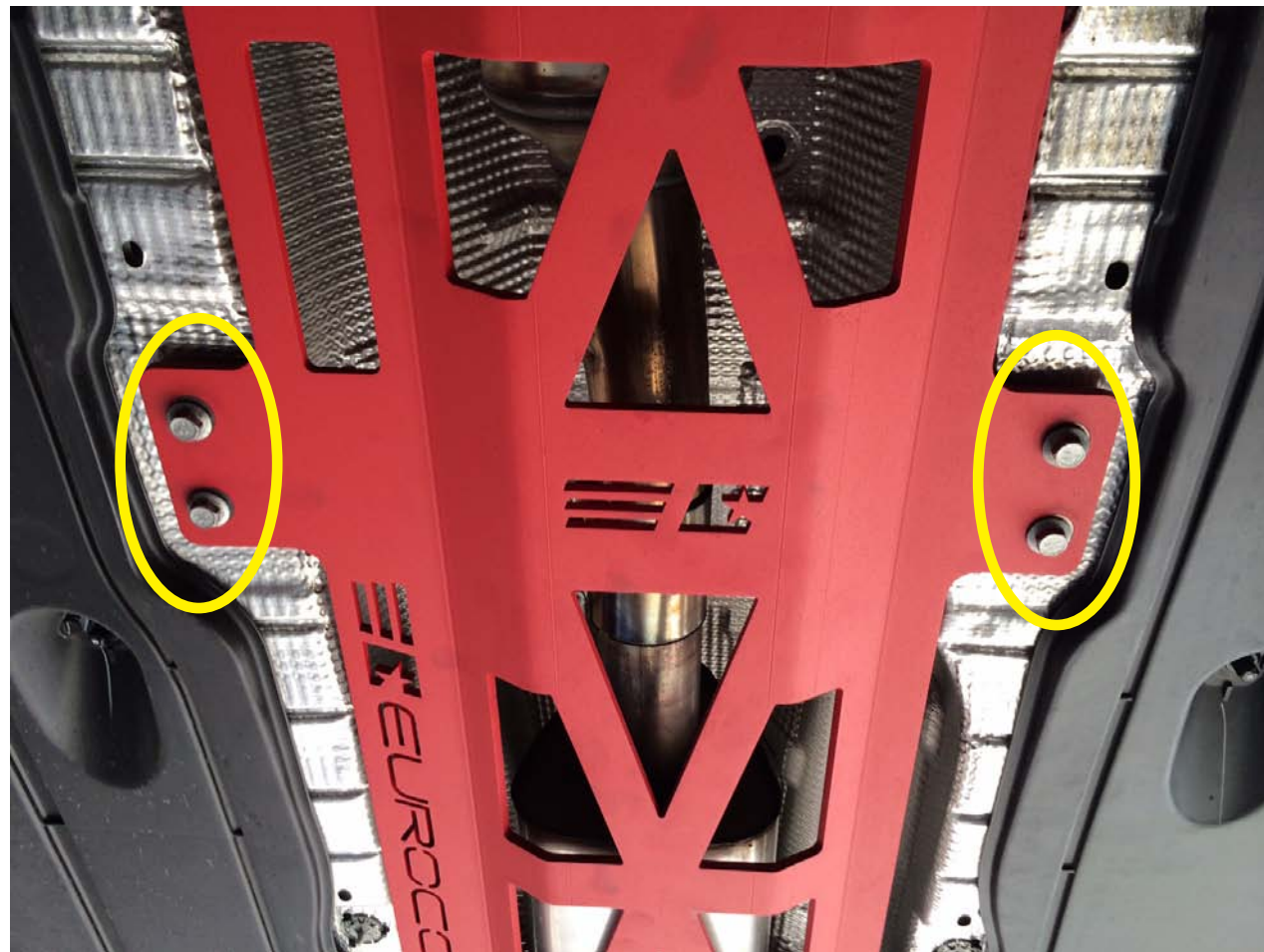
Remove the four nuts that secure the rear OEM brace using a 13mm socket. Remove the rear brace.



# STEP

# 4

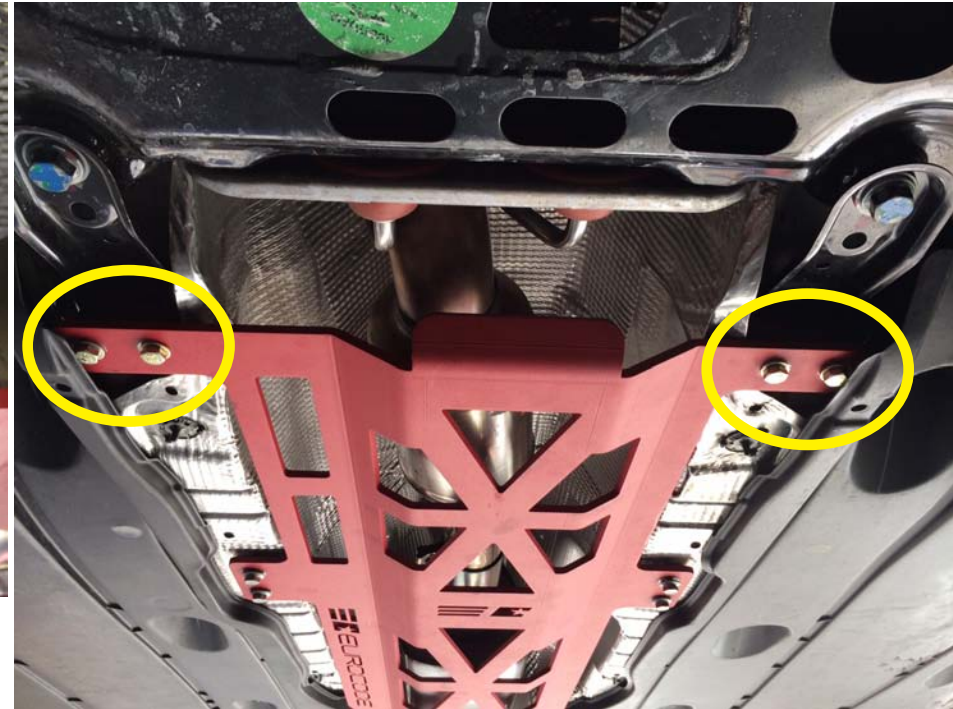
Install the Tunnel Brace by carefully lining up the brace to the rear studs and other mounting holes while carefully prying the plastic covers. Loosely install the 4 OEM bolts from step two on to the mounting holes of the middle section tabs of the Tunnel Brace.



# STEP

# 5

Install the 2 rectangular spacers on to the front section of the brace. The spacer should be between the chassis and the Tunnel Brace. Loosely secure using the provided M8 bolts or M10 bolts and the corresponding washers.

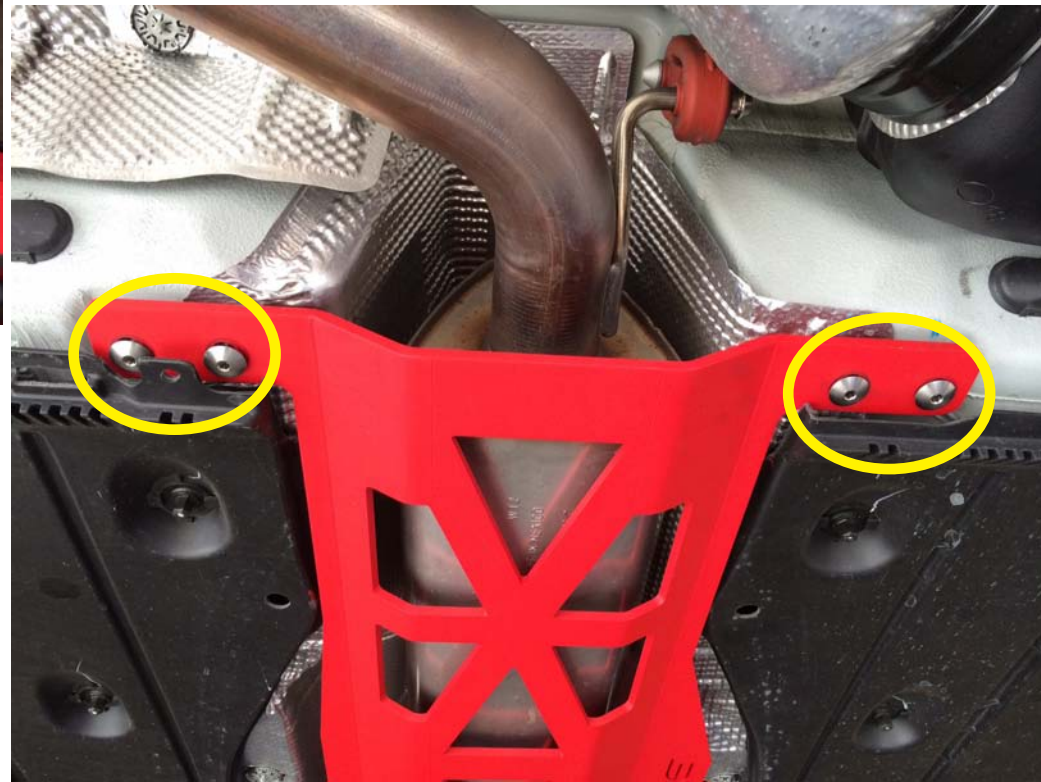




# STEP

# 6

Install the four round spacers on to the studs at the rear of the brace. The spacers should be between the chassis and the Tunnel Brace. Loosely secure by using the four barrel nuts using an M5 Allen socket.



# STEP

# 7

Hand tight all bolts and nuts in a crisscross pattern to ensure the Tunnel Brace is installed flat against the chassis and to prevent binding.



# STEP

# 8

Then torque to the following specifications:

A. Front bolts - Subframe Support (4 ea):

1. M8 or M10 Bolts: 15 ft-lbs (20 Nm) + 90 deg stretch

B. Middle bolts (4 ea): 15 ft-lbs (20 Nm)

C. Rear Barrel Nuts (4 ea): 15 ft-lbs (20 Nm)



# STEP

# 9

Carefully lower the vehicle and enjoy the benefits of a stiffer chassis.



## LIMITED ONE (1) YEAR WARRANTY

Eurocode Tuning, Inc. (EUROCODE) warrants to the original purchaser that our (PRODUCT) will be free of defects in material and workmanship for a period of one (1) year from the date of purchase.

This Warranty applies only to the original purchaser of the PRODUCT. To obtain any warranty service, you must provide EUROCODE with proof of purchase and date of purchase acceptable to EUROCODE, such as a copy of your purchase receipt. This warranty does not cover the removal or reinstallation of the product. EUROCODE will, at its option, repair, replace or refund the purchase price of a defective component, provided you return the defective component during the warranty period, transportation charges prepaid, to Eurocode Tuning's Service Department or a Factory Authorized Service Center.

Attach your name, address, telephone number, a description of the problem, and a copy of your sales receipt. All returns must be accompanied by a Return Goods Authorization (RGA) number and such number shall be written clearly on the outside of the box. RGA numbers may be obtained by calling EUROCODE at 1-310-294-8108 This warranty does not apply to the (i) metal finish or (ii) if the product/component has been damaged by accident, abuse, misuse, collision, modification, misapplication, improper installation, or improper service. This warranty is void if any EUROCODE serial number has been removed or defaced. Commercial or industrial use or application, or any motorsports use voids the warranty.

THE WARRANTY SET FORTH ABOVE IS THE ONLY WARRANTY. THERE ARE NO OTHER WARRANTIES, EXPRESS OR IMPLIED, INCLUDING BUT NOT LIMITED TO IMPLIED WARRANTIES OF MERCHANTABILITY OR FITNESS FOR A PARTICULAR PURPOSE. ANY IMPLIED WARRANTY WHICH BY LAW MAY NOT BE EXCLUDED IS LIMITED IN DURATION TO ONE (1) YEAR FROM THE DATE OF ORIGINAL RETAIL PURCHASE OF THE PRODUCT.

No EUROCODE dealer, agent or employee is authorized to make any modification, extension or addition to this warranty.

EUROCODE SHALL NOT BE LIABLE FOR SPECIAL, INDIRECT, INCIDENTAL OR CONSEQUENTIAL DAMAGES (INCLUDING, BUT NOT LIMITED TO, LOST PROFITS, DOWN TIME OR LOSS OF USE) UNDER ANY LEGAL THEORY, EVEN IF EUROCODE WAS ADVISED OF THE POSSIBILITY OF SUCH DAMAGES.

Some states do not allow the exclusion of implied warranties or the exclusion or limitation of liability for incidental or consequential damages, or limitations on how long an implied warranty lasts, so the above limitation or exclusion may not apply to you. This warranty gives you specific legal rights. You may also have other rights that vary from state to state. EUROCODE reserves the right to change Product/component design without notice. In situations in which EUROCODE has changed a Product/component design, EUROCODE shall have no obligation to upgrade or otherwise modify previously manufactured Products/components.

Warranty inquires and Products returned for warranty service should be sent to:

Eurocode Tuning, Inc.  
Customer Service Department  
1872 Del Amo Blvd Unit A  
Torrance, CA 90501  
1-310-294-8108  
1-310-212-7141 International Fax